

Utility of the DCIS Biological Risk Profile for Predicting Recurrence Risk Compared to Standard Clinicopathologic Factors

Troy Bremer¹, Pat Whitworth⁴, Rakesh Patel⁵, Todd Barry⁶, Glen Leesman¹, James Pellicane⁷, Melanie Francisco², Michael Leo², Fredrik Wärnberg³, Sheila Weinmann²

¹ PreludeDx, Laguna Hills, CA, ² Kaiser Permanente Northwest, Portland, OR, ³ Uppsala University Hospital, Uppsala, Sweden, ⁴ Nashville Breast Center, Nashville, TN, ⁵ Good Samaritan Cancer Center, Los Gatos, CA, ⁶ Spectrum Pathology, Mission Viejo, CA, ⁷ Bon Secours Cancer Institute, Richmond, VA

BACKGROUND

- Identifying patients' DCIS recurrence risk after breast conserving surgery (BCS) is an important clinical need.
- Standard clinical pathologic (CP) factors are commonly used to help assess DCIS recurrence risk.
- The utility of a novel biologic risk profile was compared with weighted CP factors.
- The biologic risk profile was developed in two large female patient cohorts treated with or without radiation therapy (RT) after BCS and subsequently validated in an independent Kaiser Permanente Northwest (KPNW) population treated with BCS and optionally RT.

MATERIALS & METHODS

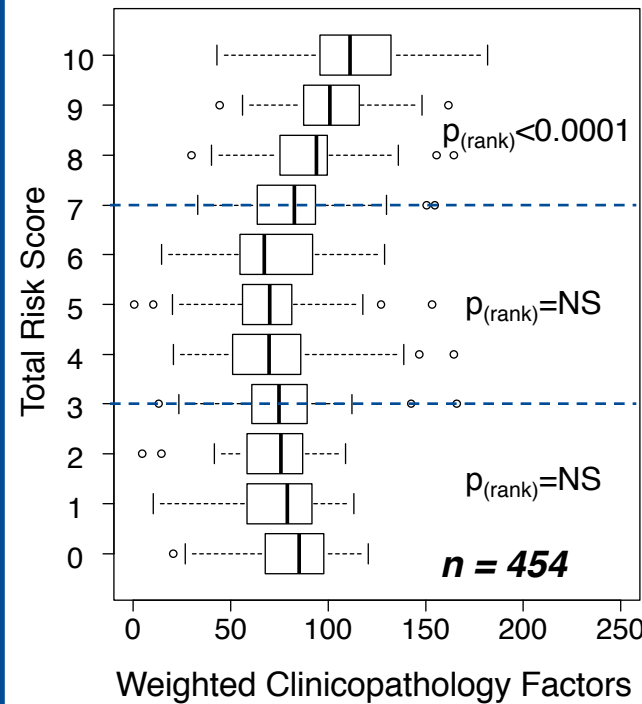
- The development cohorts included patients from Uppsala University Hospital (UUH) diagnosed with DCIS from 1986-2004, and patients from University of Massachusetts (UMass) diagnosed from 1999-2008. The subsequent independent validation study included KPNW members diagnosed with DCIS from 1990-2007.
- Biomarkers from FFPE tissue were assessed by board certified pathologists. Pathology and clinical data were collected from medical records. A biologic risk profile combined 7 biomarkers and 4 clinical pathology factors (age, extent, palpability, and margin status) to calculate a total risk score (0 to 10).
- Biologic risk profile scores (RS) were calculated using cross-validation for the development study, and generated prospectively for the KPNW validation study.
- Standard CP factors (patient age, family history, clinical presentation, tumor grade, tumor necrosis, tumor margin, and number of excisions) were combined using the MSKCC DCIS nomogram weights to calculate a CP score (0 to 200). Kruskal-Wallis analysis was used to assess if there was a ranked relationship between the RS and the CP score for each study; total recurrence risk predicted by the RS and CP score were assessed with multivariate Cox proportional hazards, respectively.

RESULTS

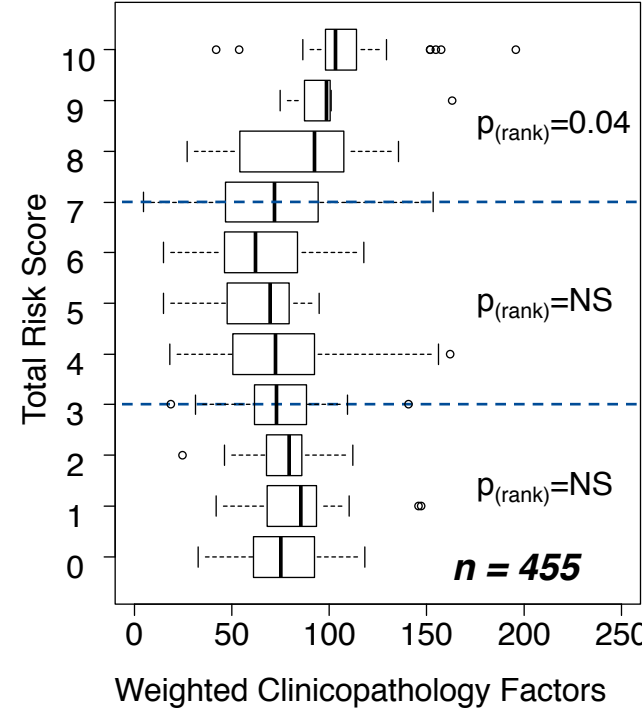
- The RS ranges (0-3) and (3-7) were independent of the CP score in all cohorts, as assessed by the Kruskal-Wallis anova.
- However, RS >7 increased with increasing CP scores in the development cohorts ($p < .0001$) and subsequent KPNW validation study ($p = 0.04$).
- Multivariate Cox proportional hazard analysis showed that recurrence risk increased with increasing RS (0-10) and decreased with radiation therapy, but was not significantly associated with the CP score.

Total Risk Score versus Weighted Clinicopathologic (CP) Factors

Uppsala University Hospital (UUH) and University of Mass. (UMASS)

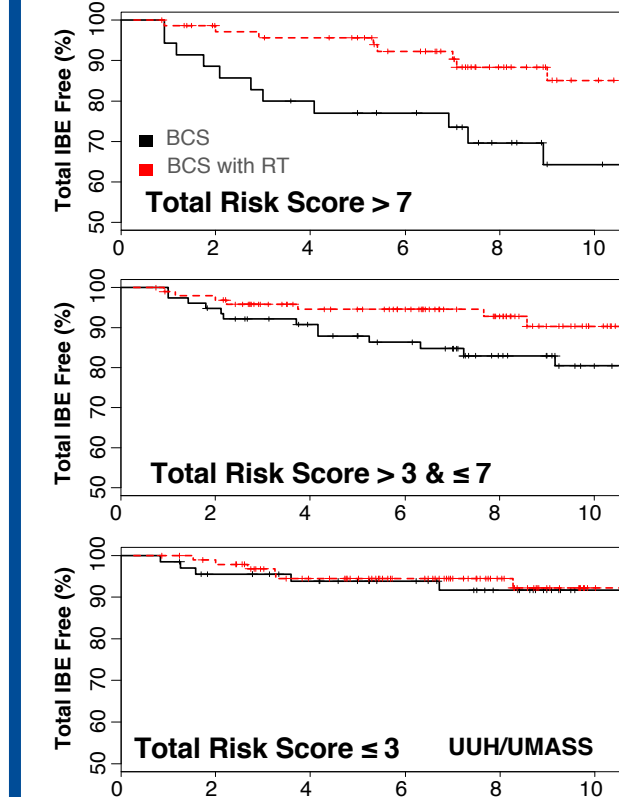


Kaiser Permanente Northwest (KPNW)

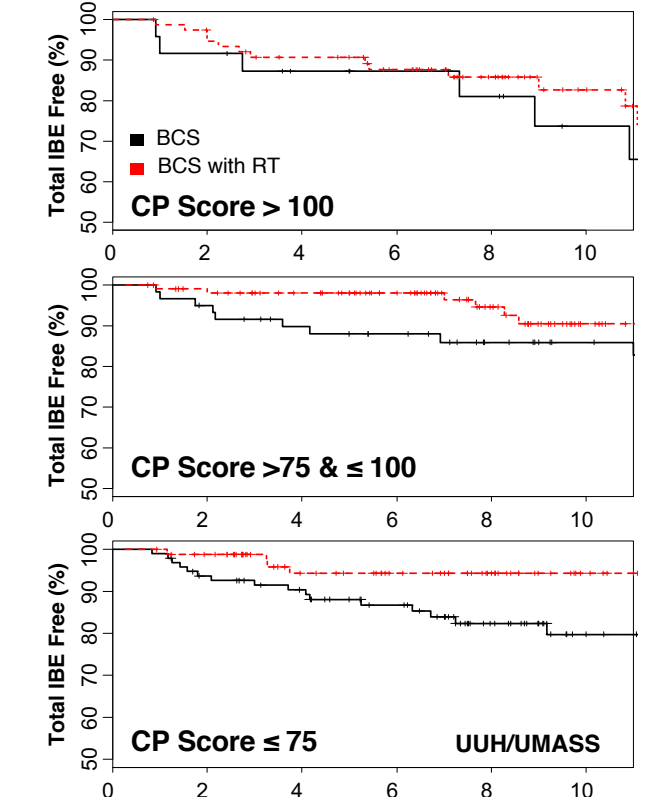


DCIS Biological Profile and CP Factors— Total Ipsilateral Breast Event (IBE) Risk

Total Risk Score



Weighted Clinicopathologic Factors



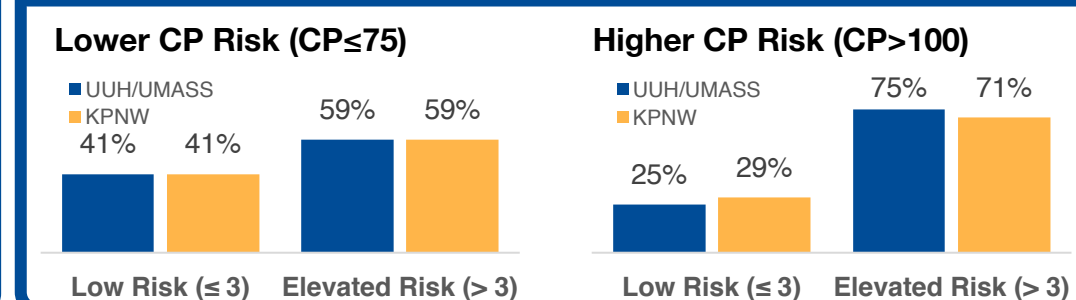
MSKCC Nomogram and Study Factors

CP Factor	UUH/UMASS CP Factors	KPNW CP Factors
Age at Dx	✓	✓
Family Hx	n/a	✓
Presentation	✓	✓
Radiation	✗	✗
Endocrine Tx	✗	✗
Nuclear Grade	✓	✓
Margins	✓	✓
No. of Excisions	n/a	✓
Year of Surgery	✗	✗

Multivariate COX Proportional Hazards

Factor	P-value	Hazard Ratio
Total Risk Score	0.0298	1.10 95%CI[1.01, 1.20]
Weighted CP Factor	0.46 (NS)	n/a
Radiation Therapy	0.0097	0.49 95%CI[0.29, 0.84]

Biological Risk Profile within lower and higher CP risk patients



DISCUSSION

- The Biological Risk Profile outperformed clinicopathologic (CP) factors for assessing total IBE risk.
- The patients with the highest DCIS Risk Profiles tended to have higher risk CP factors.
- The Biological Risk Profile reclassified 59% of patients as elevated total risk that had multiple low risk CP factors.
- The Biological Risk Profile reclassified 27% of patients as low total risk that had multiple high risk CP factors.